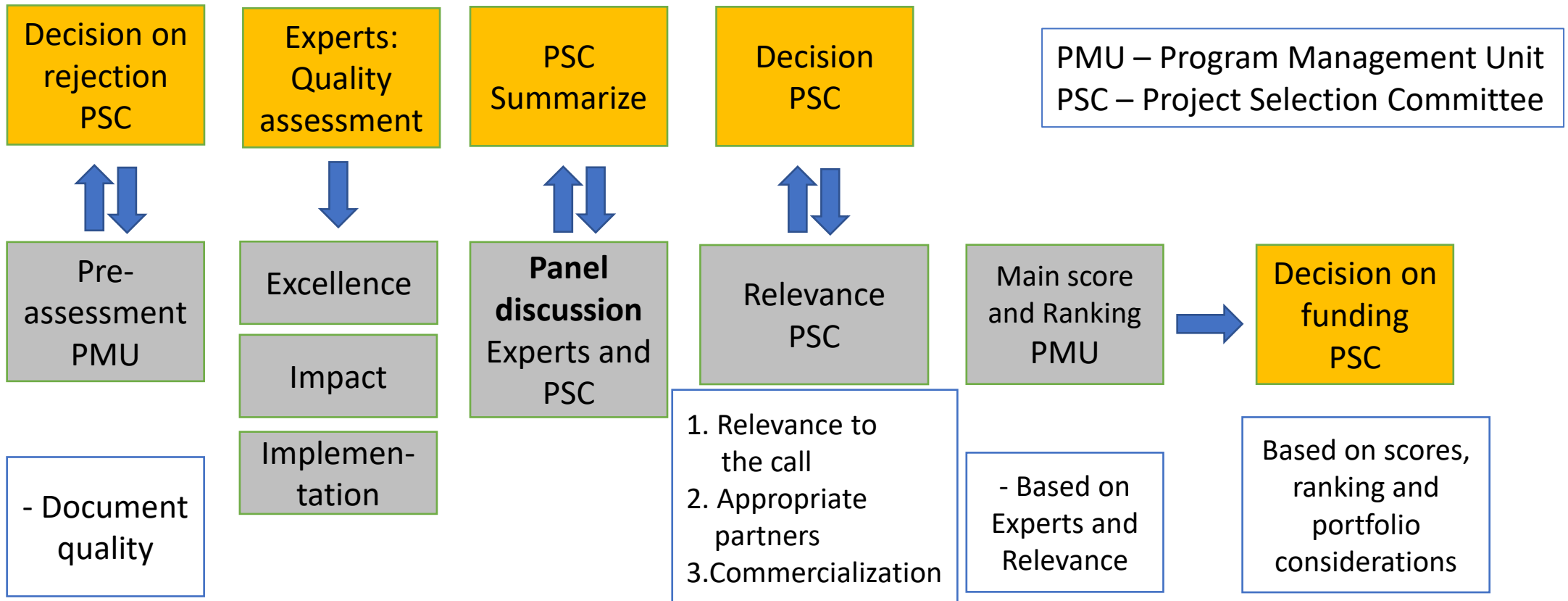


# Energize Nepal - ENEP Project Assessment criteria and process

September 12th 2022

# ENEP – Project Assessment criteria and process

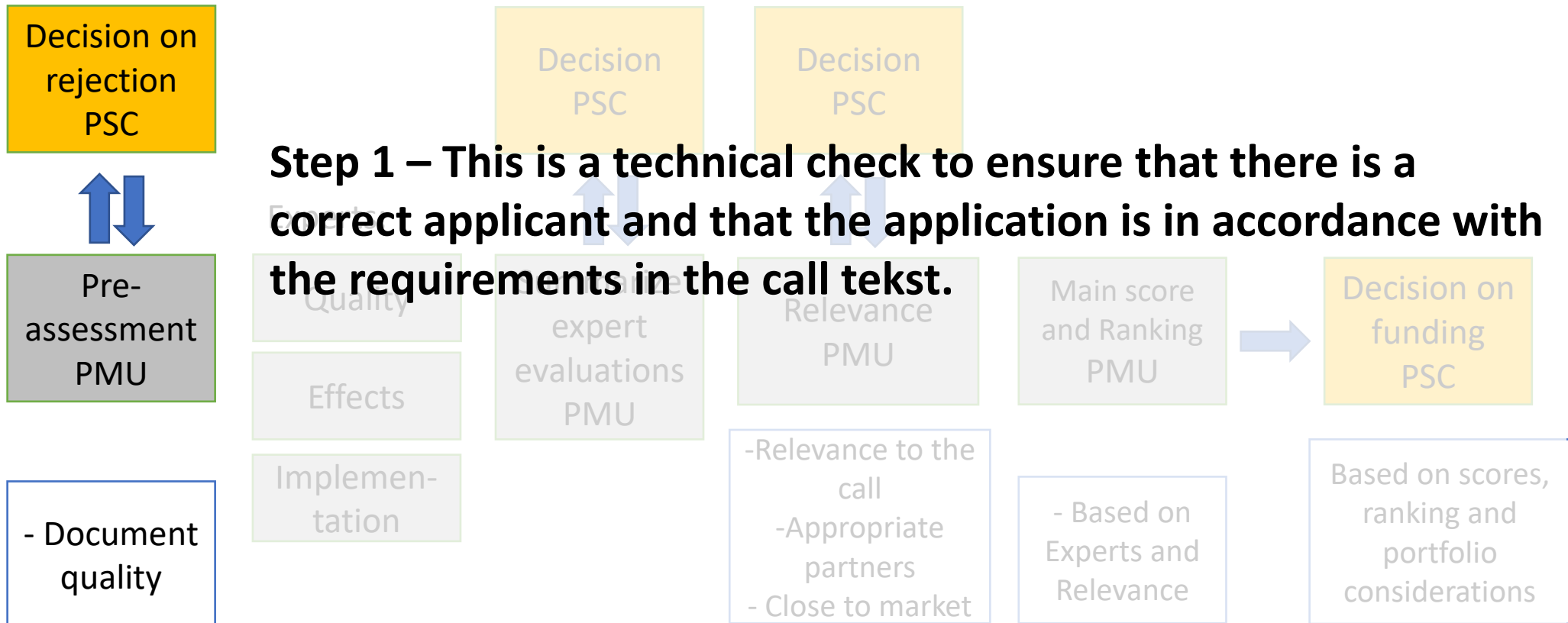
Step 1 ➔ Step 2 ➔ Step 3 ➔ Step 4 ➔ Step 5 ➔ Step 6



# ENEP – Project Assessment criteria and process

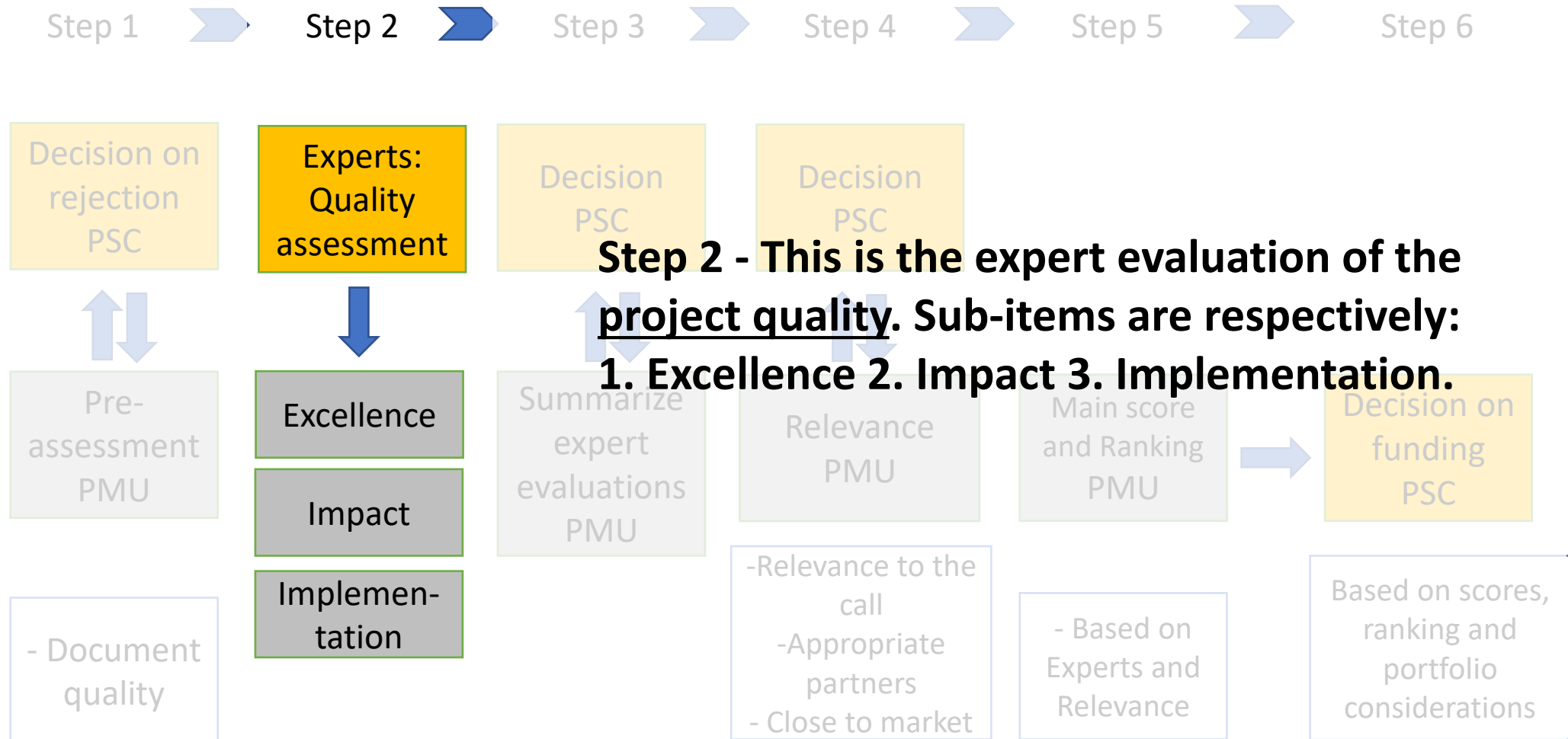
## Step 1

Step 1 → Step 2 → Step 3 → Step 4 → Step 5 → Step 6



# ENEP – Project Assessment criteria and process

## Step 2 – Project quality





# Criterion 1 Excellence

## **The extent to which the proposed work is ambitious, novel, and goes beyond the state-of-the-art**

- Scientific creativity and originality.
- Novelty and boldness of hypotheses or research questions.
- Potential for development of new knowledge beyond the current state of the art, including significant theoretical, methodological, experimental or empirical advancement.

*Is it novel  
and original?*

## **The quality of the proposed R&D activities**

- Quality of the research questions, hypotheses and project objectives, and the extent to which they are clearly and adequately specified.
- Credibility and appropriateness of the theoretical approach, research design and use of scientific methods. Appropriate consideration of interdisciplinary approaches.
- The extent to which appropriate consideration has been given to societal responsibility, ethical issues and gender dimensions in research content.
- The extent to which appropriate consideration has been given to the use of stakeholder/user knowledge.

*Is it solid?*



# Criterion 2 Impact

## Potential impact of the proposed research

- The extent to which the planned outputs of the project address important present and/or future scientific challenges.
- The extent to which the planned outputs of the project address important present and/or future challenges for the sector(s).
- The extent to which the competence developed and planned outputs of the project will provide the basis for value creation in Nepali business and/or development of the public sector.
- The extent to which the planned outputs of the project address UN Sustainable Development Goals or other important present and/or future societal challenges.
- The extent to which the potential impacts are clearly formulated and plausible.

## Communication and exploitation

- Quality and scope of communication and engagement activities targeted towards relevant stakeholders/users.
- The extent to which the partners are involved in dissemination and utilisation of the project results.

*Is the  
research  
important?*

*Will appropriate  
steps for achieving  
impact be taken?*



# Criterion 3 Implementation

## **The quality of the project manager and project group**

- The extent to which the project manager has relevant expertise and experience and demonstrated ability to perform high-quality research (as appropriate to the career stage).
- The degree of complementarity of the participants and the extent to which the project group has the necessary expertise needed to undertake the research effectively.

*Are the right people in place?*

## **The quality of the project organisation and management**

- Effectiveness of the project organisation, including the extent to which resources assigned to work packages are aligned with project objectives and deliverables.
- Appropriateness of the allocation of tasks, ensuring that all participants have a valid role and adequate resources in the project to fulfil that role.
- Appropriateness of the proposed management structures and governance.
- Appropriateness of the partners' contribution to the governance and execution of the project.

*Is it well-organised?*



# Scientific Quality - Scale of marks

Each of the criteria:

1. Excellence
2. Impact  
and
3. Implementation

Are given a score  
from 7 to 1:

---

Mark	Defining characteristics
------	--------------------------

<b>7</b>	<b>Exceptional</b>
----------	--------------------

	The proposal addresses all relevant aspects of the criterion exceptionally well. Shortcomings are not present, or only very minor
--	---

<b>6</b>	<b>Excellent</b>
----------	------------------

	The proposal successfully addresses all relevant aspects of the criterion. Only minor shortcomings are present
--	--

<b>5</b>	<b>Very good</b>
----------	------------------

	The proposal addresses the criterion very well. A small number of shortcomings are present
--	--

<b>4</b>	<b>Good</b>
----------	-------------

	The proposal addresses the criterion well. A number of shortcomings are present
--	---

<b>3</b>	<b>Fair</b>
----------	-------------

	The proposal broadly addresses the criterion, but there are a number of significant weaknesses
--	--

<b>2</b>	<b>Weak</b>
----------	-------------

	The criterion is inadequately addressed, or there are serious inherent weaknesses
--	---

<b>1</b>	<b>Poor</b>
----------	-------------

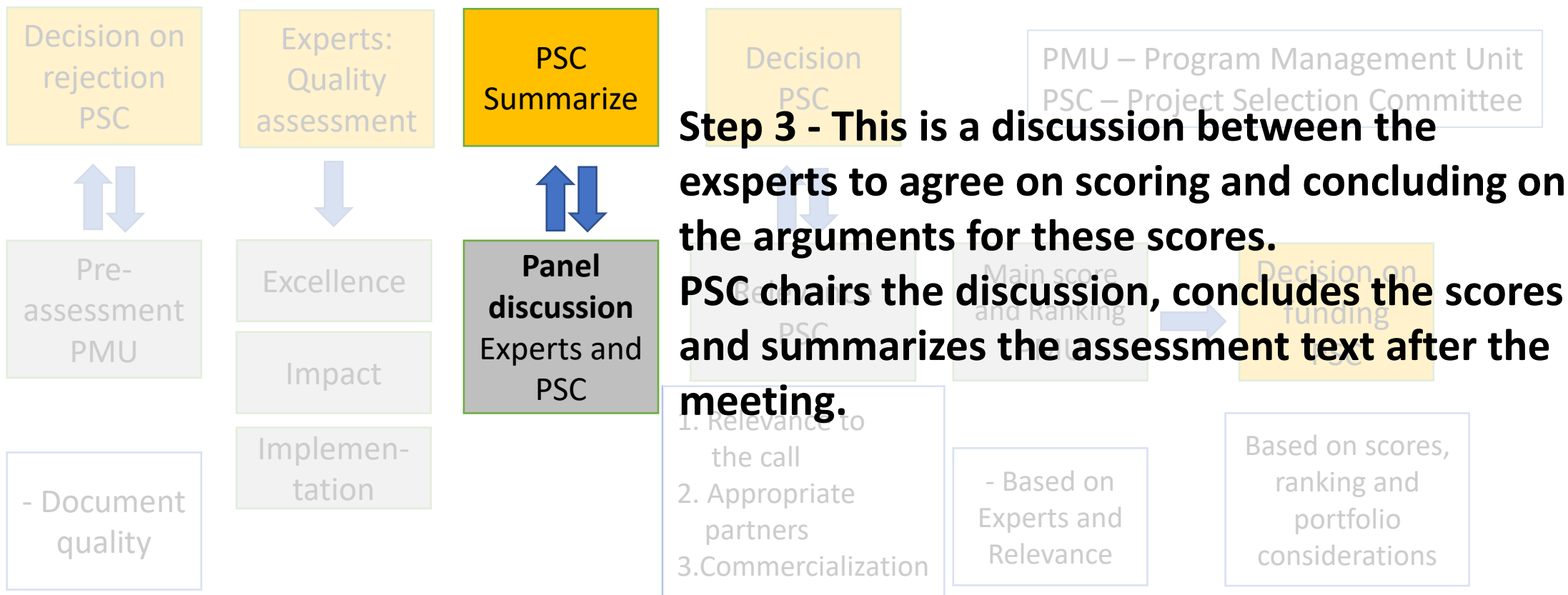
	The proposal fails to address the criterion or cannot be assessed due to missing or incomplete information
--	--

---



# ENEP – Project Assessment criteria and process

Step 1   ➡   Step 2   ➡   Step 3   ➡   Step 4   ➡   Step 5   ➡   Step 6



# ENEP – Project Assessment criteria and process

## Step 3 – expert panel

- The aim of the panel is for the experts to agree on joint scorings and the arguments for these.
- The PSC formulates the texts after the meeting. (This is to save time for fine-tuning the texts.)
- Participants are:
  - The two experts who have evaluated the applications in advance,
  - One member from the PSC who is responsible for summarizing the conclusions after the meeting,
  - One member from the PSC who chairs the meeting,
  - One member from PMU who is responsible for calling the meeting.

# ENEP – Project Assessment criteria and process

## Step 3 – expert panel

### Proposal for agenda:

1. Welcome and clarification of the goal of the meeting, (Chair)
2. Agree on the agenda (Chair)
3. Overview of the applications, the scores and assessments, and the order of processing
4. Discussion and conclusion application by application
5. Summary and closing of meeting

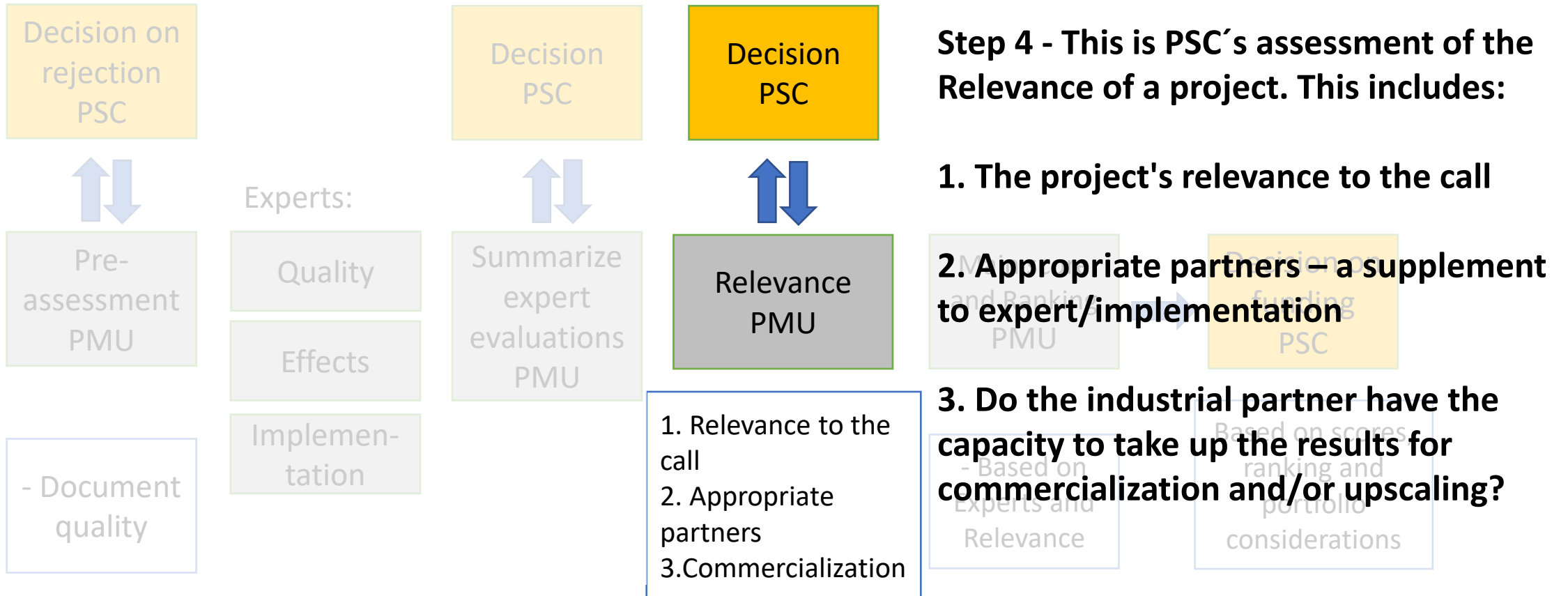
### After the meeting:

One member from the PSC are summarizing the conclusions on behalf of the experts.

# ENEP – Project Assessment criteria and process

## Step 4

Step 1 → Step 2 → Step 3 → **Step 4** → Step 5 → Step 6





# 1. Assessment of Relevance to the Call

1. To what extent does the project satisfy the thematic guidelines and delimitations?
2. To what extent does the project satisfy the requirements for partners in the project?

Suggestions for items we can look for:

- a) Does the application clearly show how the research organizations and partners collaborate in the project? Is it a clear role clarification?
- b) Has the project planned for the partners to actively participate in planning and disseminating results from the project, as well as ensuring that new knowledge is used? Are the partners represented in the project's steering group?
- c) Does the letter of intent indicate that the project is strategically anchored with the partners? Are the participation and the financial contribution described?
- d) Are there factors or uncertainties related to the partners' financing of the project that should be highlighted?
- e) Are there other factors or uncertainties related to the partners' participation that should be highlighted?



# 1. Assessment of Relevance to the Call (cont.)

3. To what extent does the project satisfy the purpose of competence building in the research environments?

Suggestions for items we can look for:

- a) To what extent does the application describe how the competence built up in the project benefits larger user groups?
- b) Does the project include recruitment positions? (only if this is a priority within the topic)
- c) Is the project funding used to strengthen the research activities at Nepali institutions, or is a large proportion of the funds used, for example abroad or for subcontracting services?
- d) Is the project funding used to strengthen the research activities, or does the funds mainly go to equipment / other?
- e) Are there other factors or uncertainties related to competence building that should be highlighted?

Are there factors in the application's document quality that affect the assessment of the above points, and which should be included in the assessment?



## 2. Appropriate partners

Based on both the expert's assessment and Input from PMU, PSC will consider to what degree the project have Appropriate partners.

## 3. Commercialization of results

Based on input from PMU and their knowledge of Nepali markets and industry PSC will conclude on two questions:

1. If the research project is successful, how far from commercialization will the results be?
2. Do the industrial partner have the capacity to take up the results for commercialization and/or upscaling?



# Scale of marks Relevance

(1. Relevance to the call + 2. Appropriate partners + 3. Commercialization)

---

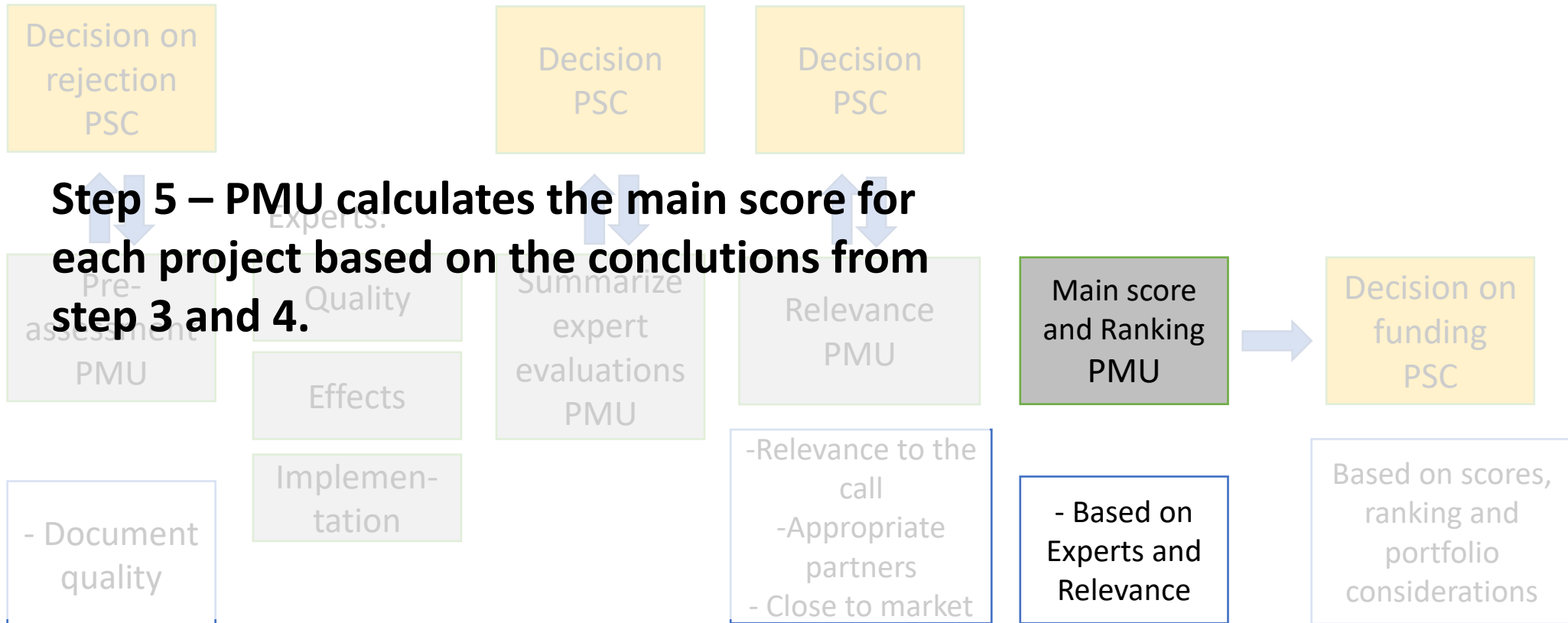
Mark	Defining characteristics
7	<b>Exceptional</b> The proposal addresses all relevant aspects of the criterion exceptionally well. Shortcomings are not present, or only very minor
6	<b>Excellent</b> The proposal successfully addresses all relevant aspects of the criterion. Only minor shortcomings are present
5	<b>Very good</b> The proposal addresses the criterion very well. A small number of shortcomings are present
4	<b>Good</b> The proposal addresses the criterion well. A number of shortcomings are present
3	<b>Fair</b> The proposal broadly addresses the criterion, but there are a number of significant weaknesses
2	<b>Weak</b> The criterion is inadequately addressed, or there are serious inherent weaknesses
1	<b>Poor</b> The proposal fails to address the criterion or cannot be assessed due to missing or incomplete information



# ENEP – Project Assessment criteria and process

## Step 5

Step 1 → Step 2 → Step 3 → Step 4 → Step 5 → Step 6



# ENEP – Project Assessment criteria and process

## Step 6

Step 1 → Step 2 → Step 3 → Step 4 → Step 5 → **Step 6**

**Step 6 PSC decides funding based on scores, ranking and portfolio considerations.**

In this step, PSC and PMU may decide that it is desirable that the applicants present their projects. This to chose the projects to be financed.

One option here is to invite applicants to present their project and answer questions from PSC and PMU. This may become relevant if it has to be chosen from among many equivalent projects.

Decision on funding PSC

Based on scores, ranking and portfolio considerations